

【TY860 系列产品介绍】

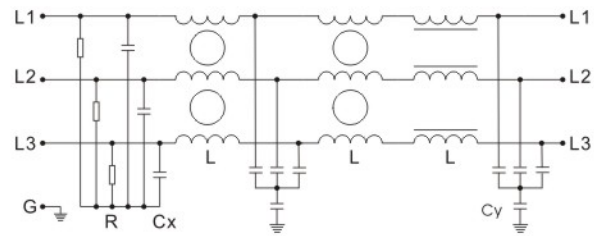
- 极佳的共模和差模干扰抑制性能;
Excellent interference-suppression for CM and DM
- 电流量大, 工作电流从 1A 到 1600 安培;
Large working current, covering 1A to 1600A
- 采用高品质元件, 确保安全使用;
High quality components ensure the safety of filters
- 用于工业强干扰滤波场合, 如变频器, 伺服驱动。
Available for high interference industrial environments, such as Frequency inverters, servo drives



Schematic

电气原理图

变频器配套滤波器匹配表



规格	额定电流	变频器功率	泄露电流	尺寸图
TY860M-5	5A	0.75 / 1.5KW	≤5mA	Fig1
TY860M-8	8A	2.2 / 3.7KW	≤5mA	Fig1
TY860M-16	16A	5.5 / 7.5KW	≤5mA	Fig2
TY860M-30	30A	11 / 15KW	≤5mA	Fig2
TY860M-45	45A	18.5 / 22.5KW	≤5mA	Fig2
TY860M-75	75A	30 / 37KW	≤10mA	Fig3
TY860M-100	100A	45KW	≤10mA	Fig3
TY860M-120	120A	55KW	≤10mA	Fig3
TY860M-150	150A	75KW	≤20mA	Fig4
TY860M-200	200A	93KW	≤20mA	Fig4
TY860T-300	300A	110 / 132 / 160	≤35mA	Fig5
TY860T-400	400A	187 / 200 KW	≤35mA	Fig5
TY860T-500	500A	220 / 250 KW	≤35mA	Fig6
TY860T-630	630A	280 / 315 KW	≤35mA	Fig6
TY860T-800	800A	350 / 400 / 450	≤65mA	Fig7
TY860T-1200	1200A	500 / 560 / 630	≤65mA	Fig7

Electrical Specs

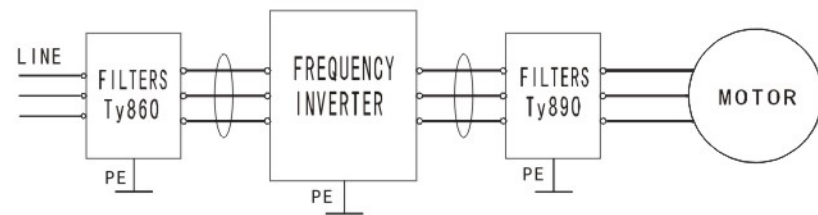
(电气参数表)

额定电压:	250/440/480VAC 50/60Hz
额定电流:	@40°C
耐压测试:	
Line to Ground:	2700VDC, 1 min
Line to Line:	1450VDC, 1 min
气候类别:	HPF(25/085/21)
最大漏电流:	
线-地(L-G):	@250 VAC 50Hz

备注: 本系列滤波器有690VAC等级滤波器可选;

Connection

安装原理图



Mechanical Specs

(安装尺寸图)

单位(Unit): mm

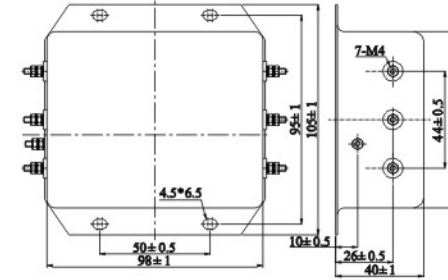


Fig1

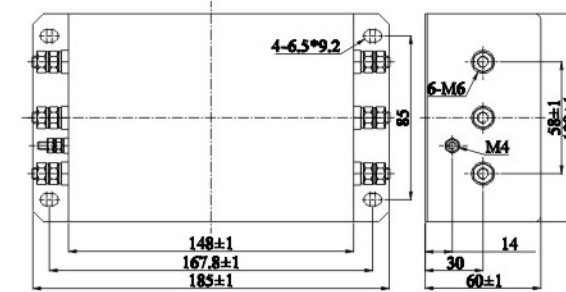
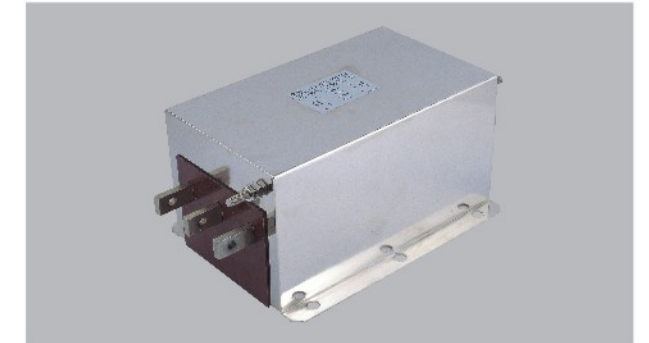


Fig2

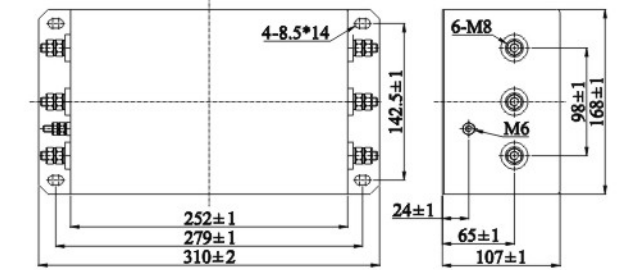


Fig3

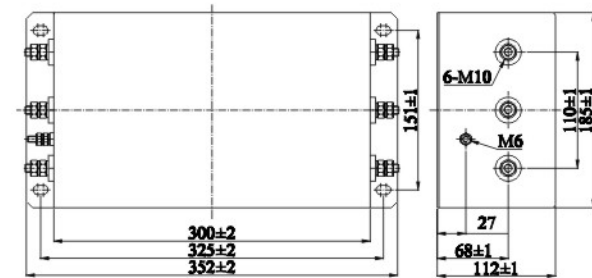
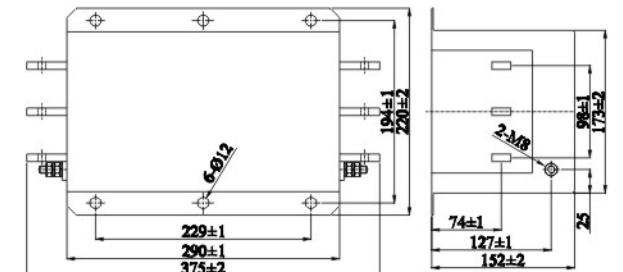
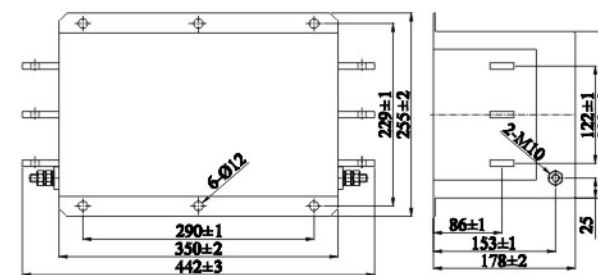


Fig4



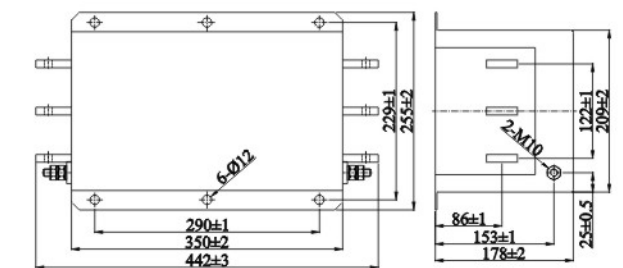
连接方式(connection): 8*20=160MM²铜排

Fig5



连接方式(connection): 8*30=240MM²铜排

Fig6



连接方式(connection): 10*40=400MM²铜排

Fig7